

Limmat Scientific

Precision measurement in a turbulent world

• Full Turn-Key System:

- Sub-Millimeter Probe with tip diameters to 0.9mm
- Signal acquisition system
- Calibration system
- Traversing system
- PPU
- Software: Data acquisition, data reduction and analysis

• Wireless data connection for remote configuration and analysis

• Traceable calibration according to customer requirements

• Probe Measurements:

- Flow Velocities
- Angles
- Total and Static Pressure

• Demonstrated robustness during continuous use in industrial and academic facilities

Contact us with your specific testing and measurement needs:

info@limmatscientific.ch

Limmat Scientific AG

Stauffacherstr. 45
CH-8004 Zurich
Switzerland

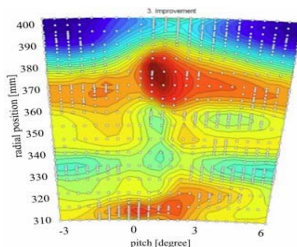
info@limmatscientific.ch



Portable Probe Measurement System

Compact fully-loaded measurement system: *Exceptional Value*

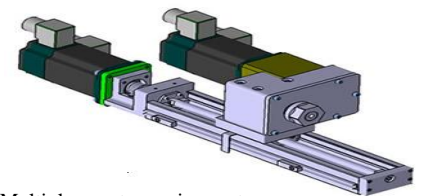
Full software acquisition and analysis suite



Compact carrying case



Ultra-miniature probes for finer, denser measurements



Multiple area traversing system

New Product Offering

Compact and portable, a fully equipped measurement system at a reduced price. This powerful tool can be anywhere precision flow measurements are required: in the laboratory or off-site locations.

LSC's integrated turn-key system includes a signal acquisition system, a traversing system, a pressure supply unit, power pressure units (PPU) and a complete suite of data acquisition, data reduction and analysis software. Wireless connection supports remote configuration and analysis.

Supports all LSc 5-Hole and third party measurement probes.